



TCC
TECNO CHAIR COMPANY

Rivestimenti | Coverings



reddot award 2016
winner

good
design
award 2014



TCC

TECNO CHAIR COMPANY

style at work



TCC srl
via Abate Tommaso, 74
30020 Quarto d'Altino (VE) Italy
phone (+39) 0422 363571
fax (+39) 0422 465329
www.tcc-seating.it - info@tcc-seating.it

A.D., progetto grafico:
Publicom - info@publicom.eu
Coordinamento: MKT - TCC
Gennaio 2018



Corallo

Descrizione - Description

Tessuto crepe jacquard / Crepe Jacquard fabric

Composizione - Composition

100% Poliestere

Peso - Weight

En 12127 - 350g/ml 250 g/m²

Resistenza all'abrasione - Resistance to abrasion

ISO 12947/2 - 100.000 Cikli

Reazione al fuoco - Flammability

UNI 9175 Classe 11M

NF 92501-7 Class M1 with treatment if request

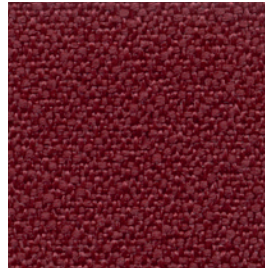
EN 1021 - 1, 2

BS Crib 5

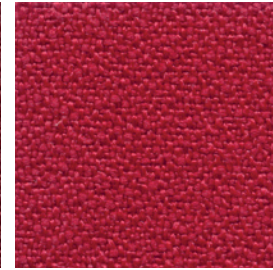
BS 7176 Class Medium Hazard

California TB 117

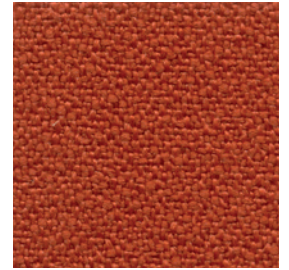
Cat. 1



Bordeau **1AR**



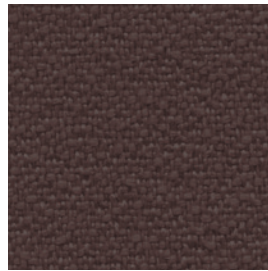
Rosso **1AB**



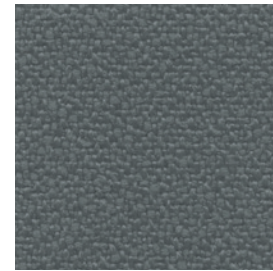
Aragosta **1AC**



Tortora **1AI**



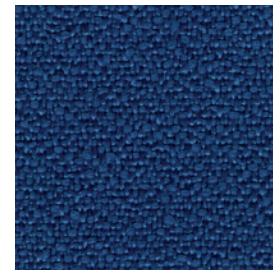
Testa di moro **1AS**



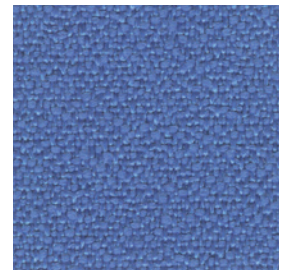
Grigio **1AM**



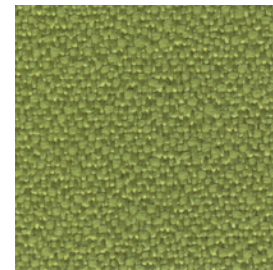
Nero **1AN**



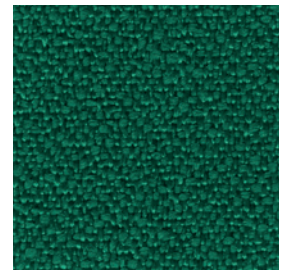
Blu **1AF**



Avio **1AG**



Verde chiaro **1AP**



Verde **1AQ**





Vertigo

Descrizione - Description

Tessuto melange e colori uniti / Melange and solid color fabric

Composizione - Composition

100% Polipropilene FR

Peso - Weight - Poids

En 12127 - 230 g/m²

Resistenza all'abrasione - Resistance to abrasion

ISO 12947/2 - 80.000 Cicli

Reazione al fuoco - Flammability

UNI 9175 Classe 11M

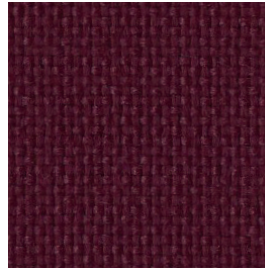
BS EN 1021-1, 2

BS 5852:2006 (Crib 5)

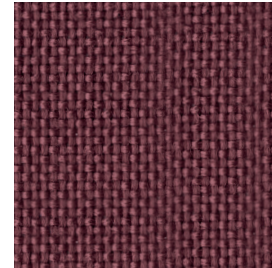
California Technical Bulletin 117:2013

IMO - 2010 FTP CODE

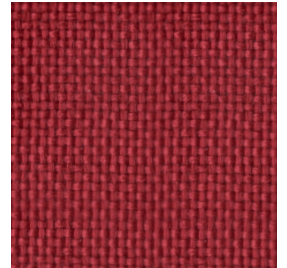
Cat. 1



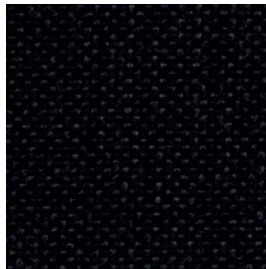
Bordeau **1DM**



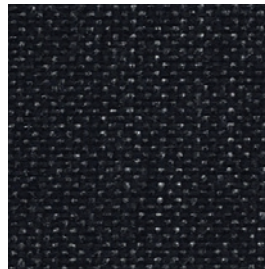
Vinaccia **1DI**



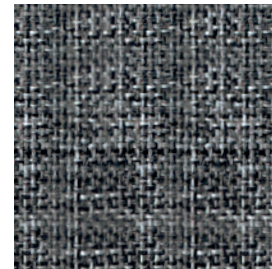
Rosso **1DF**



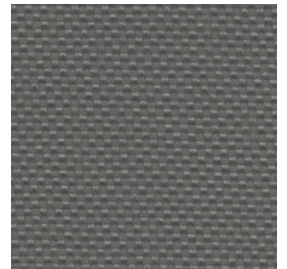
Nero **1DA**



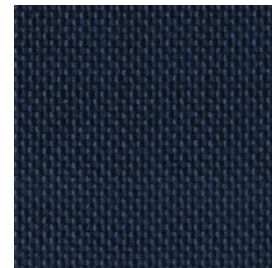
Antracite **1DB**



Grigio melange **1DN**



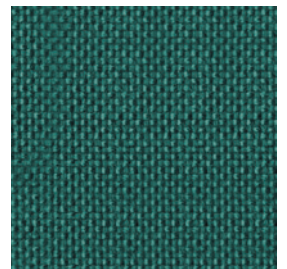
Grigio **1DL**



Blu scuro **1DH**



Blu **1DE**



Verde **1DG**



Leggere differenze di colore fra un lotto e l'altro sono da considerarsi normali
Slight colour differences between one lot and another have to be considered within commercial tolerance



Expo

Descrizione - Description

Tessuto 100% batteriostatico Anallergico - bacteriostatic, hypoallergenic

Composizione - Composition

100% Propitex FR

Peso - Weight

En 12127 - 300 g/m²

Resistenza all'abrasione - Resistance to abrasion

ISO 12947/2 - 100.000 Cicli

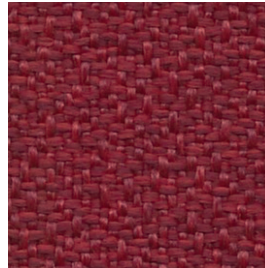
Reazione al fuoco - Flammability

UNI 9175 Classe 1IM

BS EN 1021-1, 2

BS 5852:2006 (Crib 5)

California Technical Bulletin 117:2013



Rosso **2BA**



Torba **2BC**



Mattone **2BD**



Terra **2BE**



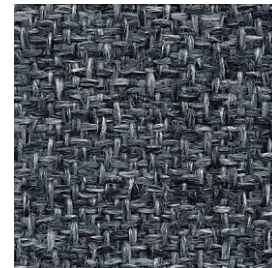
Beige **2BF**



Panna **2BG**



Antracite **2BH**



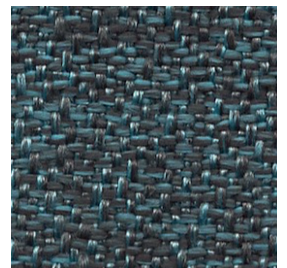
Grigio melange **2BI**



Grigio **2BL**



Verde **2BM**



Smeraldo **2BN**



Leggere differenze di colore fra un lotto e l'altro sono da considerarsi normali
Slight colour differences between one lot and another have to be considered within commercial tolerance



Cherso

Descrizione - Description

Tessuto a piccoli rilievi tinta unita o puntinato / Small relief fabric solid and dotted colors

Composizione - Composition

100% Poliestere FR

Peso - Weight

En 12127 - 560 g/ml 400g/m²

Resistenza all'abrasione - Resistance to abrasion

ISO 12947/2 - 80.000 Cicli

Reazione al fuoco - Flammability

UNI 9175 Classe 1IM | UNI 9174 - UNI 8456 C1

DIN 4102 B1 | NF 92501-7 M1

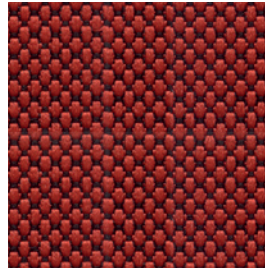
NF D 60013 AM18 | BS 5852 part II CRIB 5

EN 1021-1&2 | BS 7176 Medium hazard

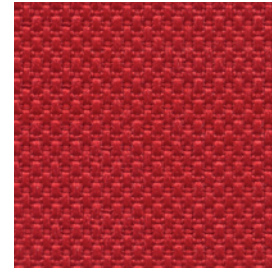
EN 13773 class 1 | ONORM B 3825 - Onorm A 3800-1 Class B1-Q1-TR1

California TB 117 | USA NFPA 701 - 260

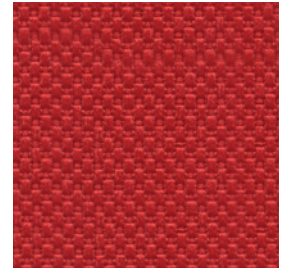
Cat. **2**



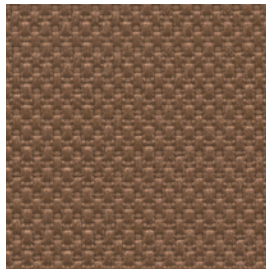
Rosso puntinato **2AL**



Rosso scuro **2AM**



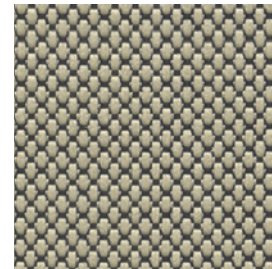
Rosso **2AN**



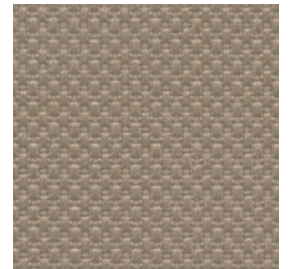
Nocciola **2AC**



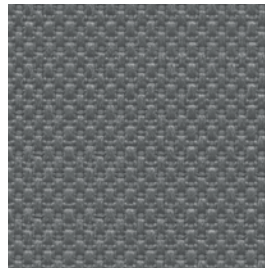
Nocciola puntinato **2AD**



Beige puntinato **2AB**



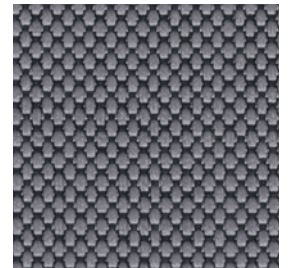
Beige **2AA**



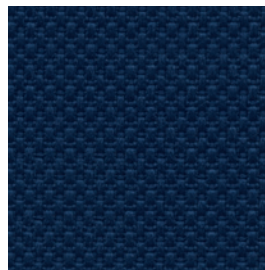
Grigio **2AE**



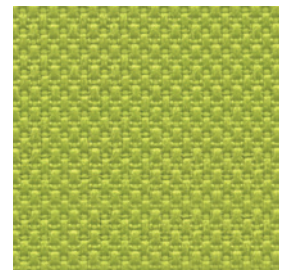
Antracite **2AG**



Grigio puntinato **2AF**



Blu **2AH**



Verde **2AI**





Pirano

Descrizione - Description

Tessuto jacquard sablé / Jacquard sablé fabric

Composizione - Composition

100% Poliestere FR TREVIRA cs

Peso - Weight

En 12127 - 420 g/ml 300g/m²

Resistenza all'abrasione - Resistance to abrasion

ISO 12947/2 - 100.000 Cikli

Reazione al fuoco - Flammability

UNI 9175 Classe 1IM | UNI 9174 - UNI 8456 C1 | DIN 4102 B1 | NF 92501-7 M1

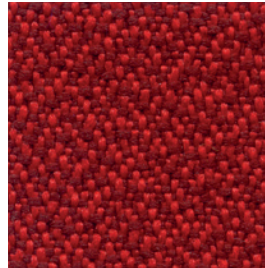
NF D 60013 AM18 | BS 5852 part II CRIB 5 |

EN 1021-1&2 | BS 7176 Medium hazard | EN 13773 class 1

ONORM B 3825-Onorm A 3800-1 Class B1-Q1-TR1 | California TB 117

USA NFPA 701 - 260 | IMO A 652 Part 8 Upholstery

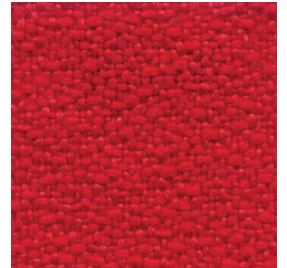
Cat. **2**



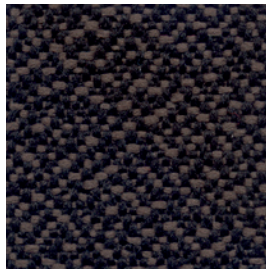
Rosso puntinato **2EE**



Rosso scuro **2CA**



Rosso **2EH**



Nocciola puntinato **2CB**



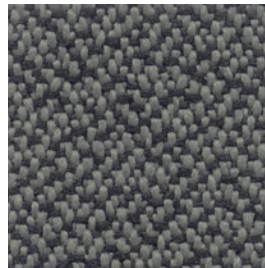
Nocciola **2EM**



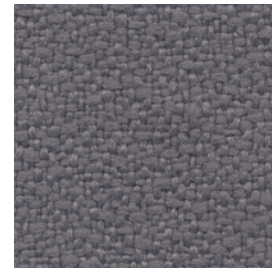
Beige **2CC**



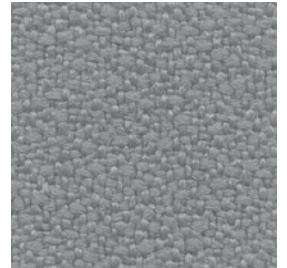
Nero **2EO**



Grigio puntinato **2EZ**



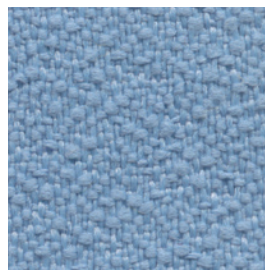
Grigio scuro **2CD**



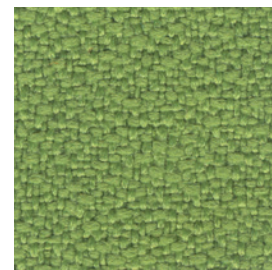
Grigio chiaro **2CF**



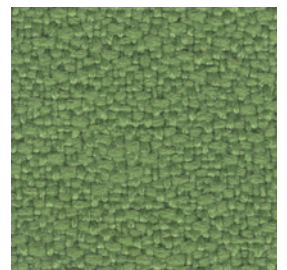
Blu scuro **2EA**



Celeste **2CG**



Verde chiaro **2CH**



Verde scuro **2CI**



Leggere differenze di colore fra un lotto e l'altro sono da considerarsi normali
Slight colour differences between one lot and another have to be considered within commercial tolerance



Roccia

Descrizione - Description

Tessuto a 2 colori tinto filo. Mano laniera
Yarn dyed 2 color melange fabric. Wool handtouch

Composizione - Composition

100% Poliestere FR TREVIRA cs

Peso - Weight

En 12127 - 350 g/ml 250g/m²

Resistenza all'abrasione - Resistance to abrasion

ISO 12947/2 - 70.000 Cicli

Reazione al fuoco - Flammability

UNI 9175 Classe 1IM | UNI 9174 - UNI 8456 C1 | DIN 4102 B1

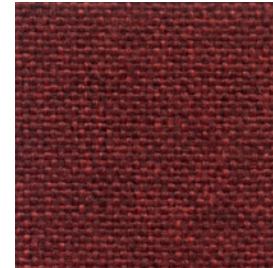
NF 92501-7 M1 | NF D 60013 AM18 | BS 5852 part II CRIB 5

EN 1021-1&2 | BS 7176 Medium hazard

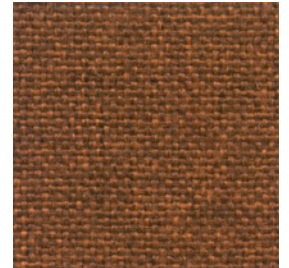
EN 13773 class 1 | ONORM B 3825-Onorm A 3800-1 Class B1-Q1-TR1

California TB 117 | USA NFPA 701 - 260 | IMO A 652 Part 8 Upholstery

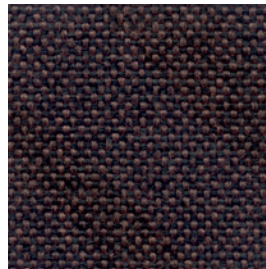
Cat. **3**



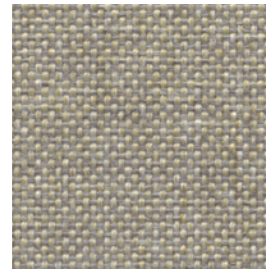
Rosso **3BA**



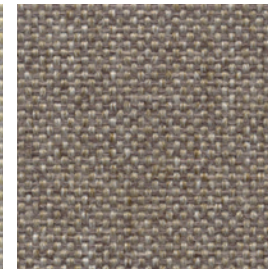
Arancione **3BC**



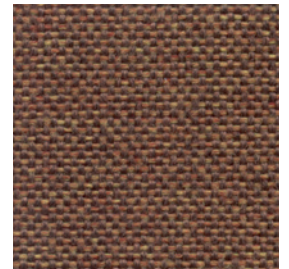
Marrone **3BD**



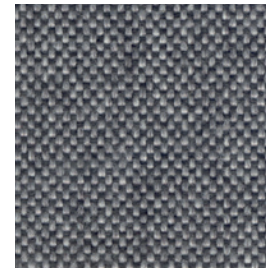
Beige chiaro **3BE**



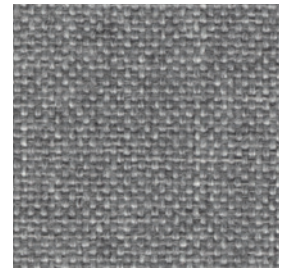
Beige scuro **3BF**



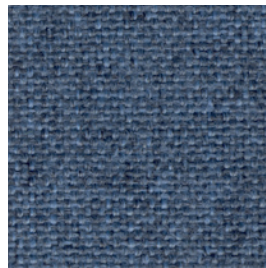
Marrone chiaro **3BG**



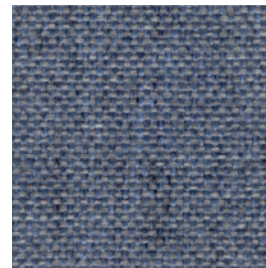
Grigio scuro **3BH**



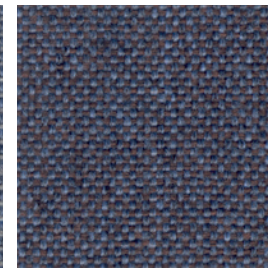
Grigio chiaro **3BI**



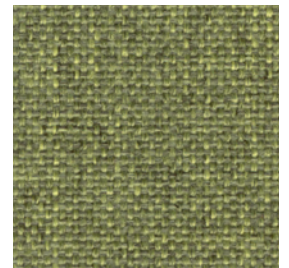
Avio **3BL**



Blu chiaro **3BM**



Blu scuro **3BN**



Verde **3BO**



Leggere differenze di colore fra un lotto e l'altro sono da considerarsi normali
Slight colour differences between one lot and another have to be considered within commercial tolerance

Malvasia

Descrizione - Description

Tessuto compatto colori uniti e bicolori. Mano laniera
Fabric with a compact structure in single and two-colour
items. Particular wool handtouch.

Composizione - Composition

100% Poliestere FR TREVIRA cs

Peso - Weight

En 12127 - 365 g/ml 260g/m²

Resistenza all'abrasione - Resistance to abrasion

ISO 12947/2 - 65.000 Cicli

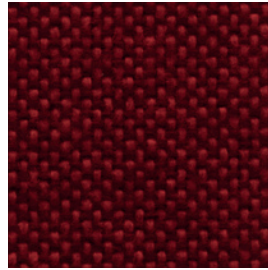
Reazione al fuoco - Flammability

UNI 9175 Classe 1IM | UNI 9174 - UNI 8456 C1 | DIN
4102 B1

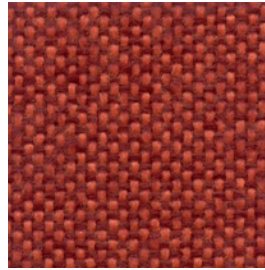
NF 92501-7 M1 | NF D 60013 AM18 | BS 5852 part
II CRIB 5

EN 1021-1&2 | BS 7176 Medium hazard | EN 13773
class 1

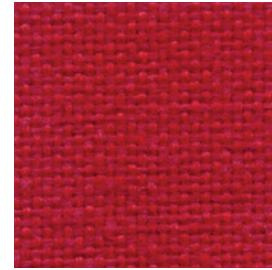
ONORM B 3825-Onorm A 3800-1 Class B1-Q1-TR1
California TB 117 | USA NFPA 701 - 260 | IMO A 652
Part 8 Upholstery



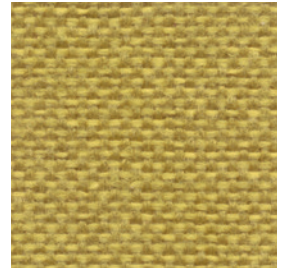
Rosso puntinato **3JD**



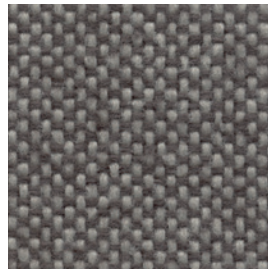
Arancione **3JE**



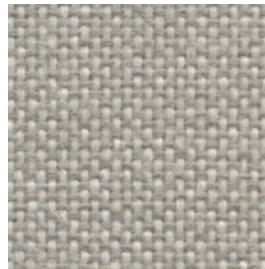
Rosso **3JF**



Giallo **3JG**



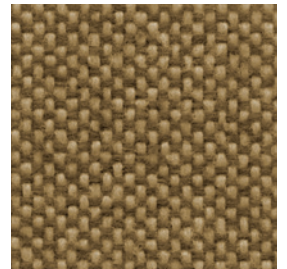
Beige puntinato **3JB**



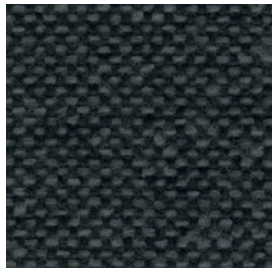
Beige chiaro **3JH**



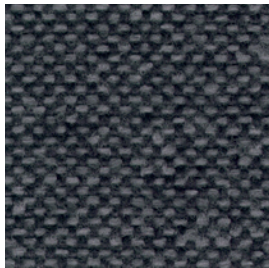
Beige scuro **3JI**



Giallo puntinato **3JD**



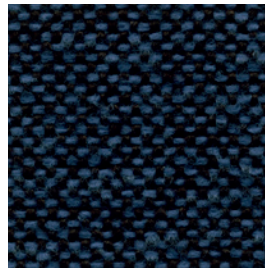
Antracite **3JL**



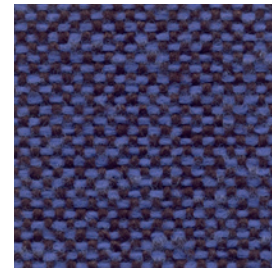
Grigio puntinato **3JM**



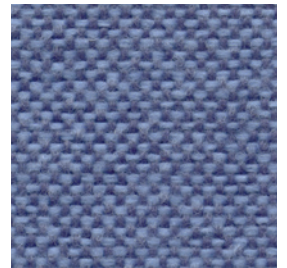
Grigio scuro **3JN**



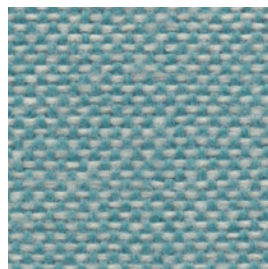
Blu scuro **3JO**



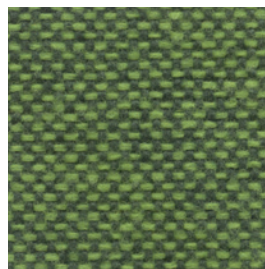
Blu puntinato **3JP**



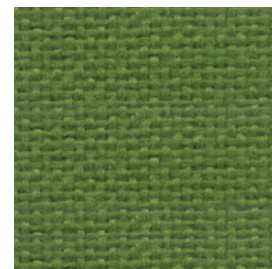
Celeste **3JQ**



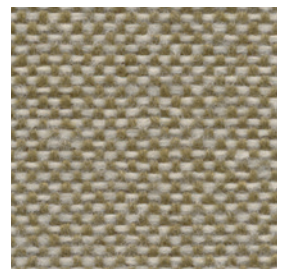
Smeraldo **3JA**



Verde puntinato **3JR**



Verde **3JS**



Verde chiaro puntinato **3JC**





Lucky

Descrizione - Description

Poliestere alta tenacità a struttura portante
High-strength polyester with supporting structure

Composizione - Composition

100% Poliestere

Peso - Weight

En 12127 - 400g/m²

Resistenza all'abrasione - Resistance to abrasion

ISO 12947/2 - 200.000 Cidi

Reazione al fuoco - Flammability

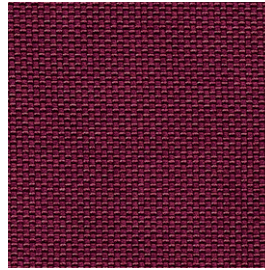
UNI 9175 Classe 1IM | NF 92501-7 M1

BS 5852 CRIB 5 | EN 1021-1&2

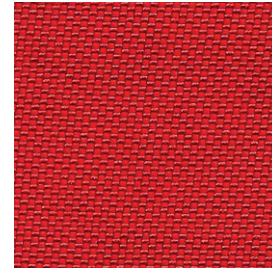
BS 7176 Medium hazard | California TB 117

IMO 2010 FTP

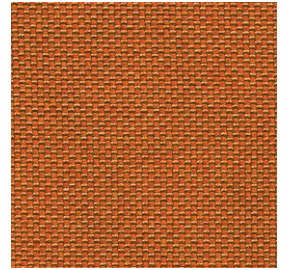
Cat. **3**



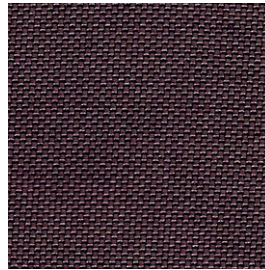
Vinaccia **3CA**



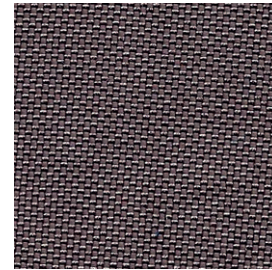
Rosso **3CB**



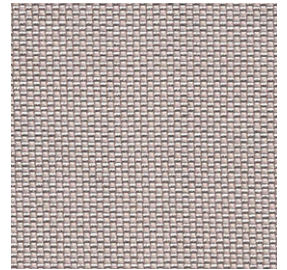
Arancione **3CC**



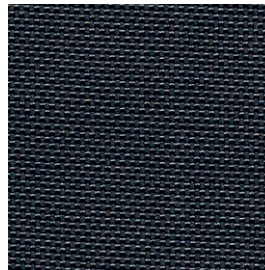
Marrone **3CD**



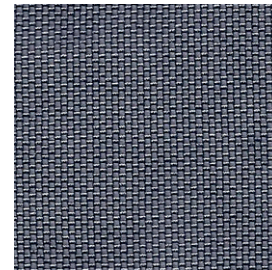
Nocciola **3CE**



Beige **3CF**



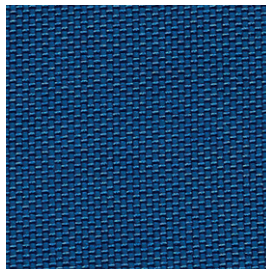
Grigio scuro **3CG**



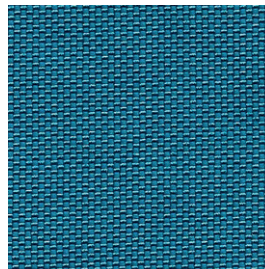
Grigio chiaro **3CH**



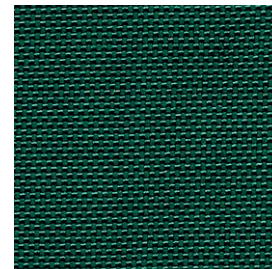
Nero **3CI**



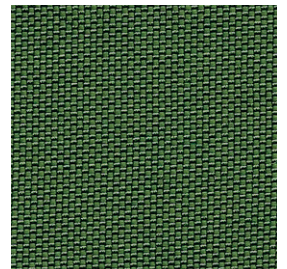
Blu **3CM**



Smeraldo **3CN**



Verde scuro **3CO**



Verde chiaro **3CP**



Leggere differenze di colore fra un lotto e l'altro sono da considerarsi normali
Slight colour differences between one lot and another have to be considered within commercial tolerance



Secret

Descrizione - Description

Ecopelle ignifuga / Fire retardant eco-leather

Composizione - Composition

76% PVC, 2% PU, 22% PES

Peso - Weight

En 12127 - 540g/m²

Resistenza all'abrasione - Resistance to abrasion

ISO 12947/2 - 60.000 Cicli

Reazione al fuoco - Flammability

EN 1021-2:2006

UNI 9175 classe 1 IM

BS5852-1:1979 part I

TB 117:2013

Cat. **3**



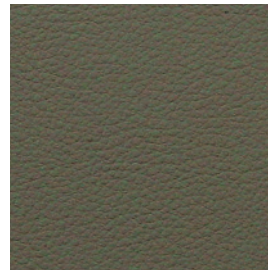
Rosso **3DA**



Bordeaux **3DB**



Testa di moro **3DC**



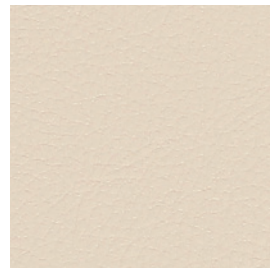
Marrone **3DD**



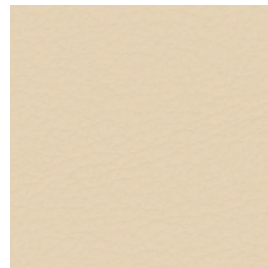
Tortora **3DE**



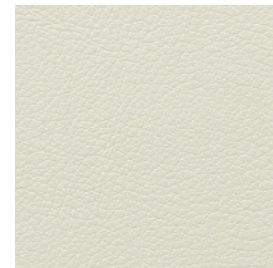
Cuoio **3DF**



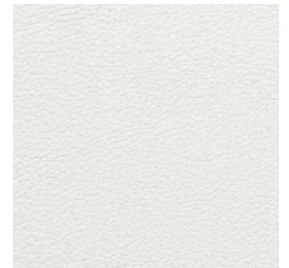
Beige **3DG**



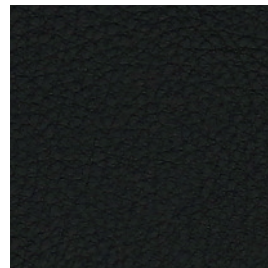
Crema **3DH**



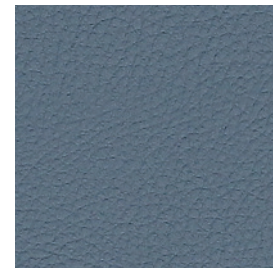
Panna **3DI**



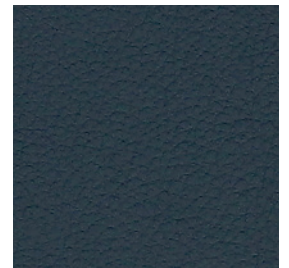
Bianco **3DL**



Nero **3DM**



Avio **3DN**



Blu scuro **3DO**



Leggere differenze di colore fra un lotto e l'altro sono da considerarsi normali
Slight colour differences between one lot and another have to be considered within commercial tolerance



Fenice

Descrizione - Description

Panno di Lana / Wool

Composizione - Composition

75% Lana - 25% Poliammide

Peso - Weight

En 12127 - 500 g/ml

Resistenza all'abrasione - Resistance to abrasion

ISO 12947/2 - 100.000 Cicli

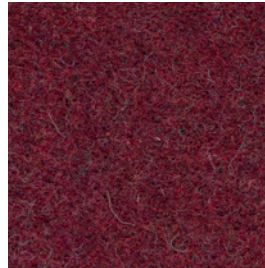
Reazione al fuoco - Flammability

UNI 9175 Classe 11M

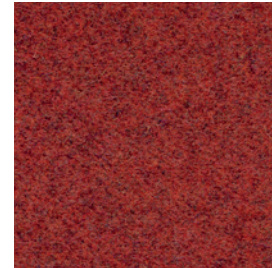
EN 1021-1&2

California TB 117

Cat. 4



Bordeaux **4AM**



Rosso scuro **4AH**



Rosso **4AN**



Testa di moro **4AF**



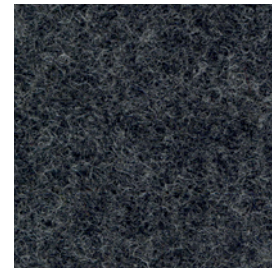
Marrone **4AE**



Arancione **4AG**



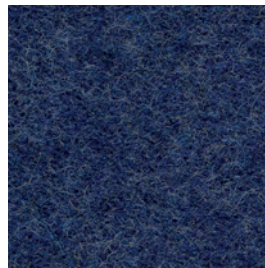
Beige **4AD**



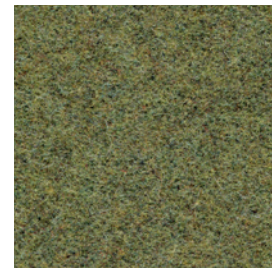
Antracite **4AL**



Grigio **4AI**



Blu **4AO**



Verde scuro **4AP**



Verde chiaro **4AC**



Leggere differenze di colore fra un lotto e l'altro sono da considerarsi normali
Slight colour differences between one lot and another have to be considered within commercial tolerance



Runner

Descrizione - Description

Tessuto in alveolare ignifugo / Fire retardant alveolar fabric

Composizione - Composition

100% Poliestere

Peso - Weight

En 12127 - 500 g/ml

Resistenza all'abrasione - Resistance to abrasion

ISO 12947/2 - 70.000 Cicli

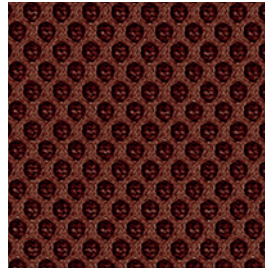
Reazione al fuoco - Flammability

UNI 9175 Classe 11M

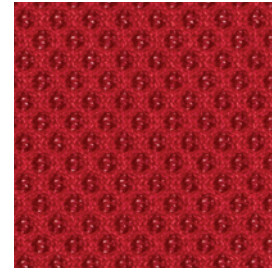
EN 1021-1&2

California TB 117

Cat. 4



Mattone 4DA



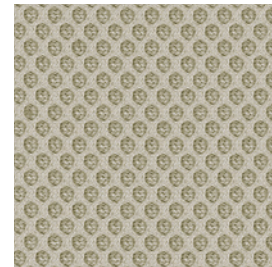
Rosso 4DB



Arancione 4DC



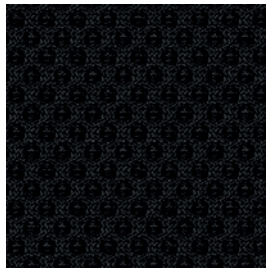
Testa di moro 4DD



Bianco panna 4DE



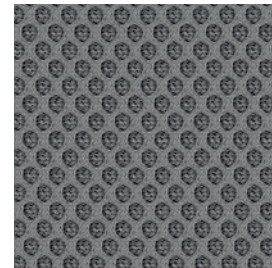
Bianco 4DF



Nero 4DG



Antracite 4DH



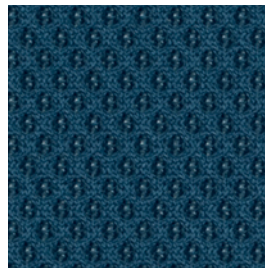
Titanio 4DI



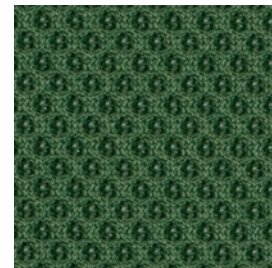
Grigio 4DL



Blu 4DM



Avio 4DN



Verde scuro 4DO



Verde chiaro 4DP



OEKO-TEX®
CERTIFIED IN TEXTILES
STANDARD 100
073313, O-CENTROCOIT
Valida for household applications
www.oeko-tex.com/standard100

Gabriel®

Rustico

Descrizione - Description

Tessuto tinto filo. Striature irregolari, mano laniera
Yarn dyed fabric. Irregular striped effect, wool handtouch

Composizione - Composition

100% Poliestere FR TREVIRA cs

Peso - Weight

En 12127 - 560 g/ml 400 g/m²

Resistenza all'abrasione

Resistance to abrasion
ISO 12947/2 - 70.000 Cicli

Reazione al fuoco - Flammability

UNI 9175 Classe 1IM

UNI 9174 - UNI 8456 C1

DIN 4102 B1

NF 92501-7 M1

NF D 60013 AM18

BS 5852 part II CRIB 5

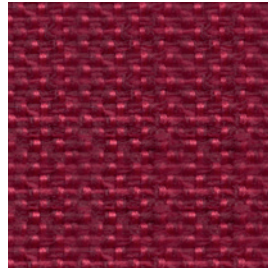
EN 1021-1&2 I BS 7176 Medium hazard

EN 13773 class 1

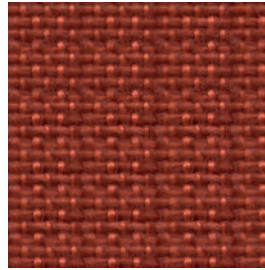
ONORM B 3825-Onorm A 3800-1 Class B1-Q1-TR1

California TB 117 I USA NFPA 701 - 260

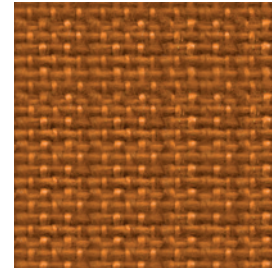
IMO A 652 Part 8 Upholstery



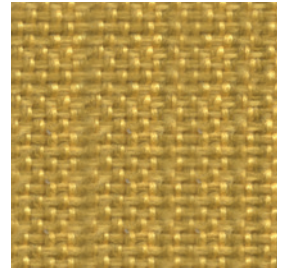
Rosso scuro **4EA**



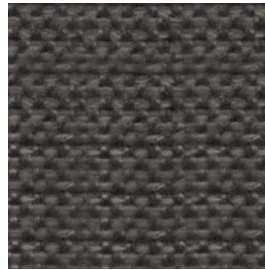
Rosso chiaro **4EB**



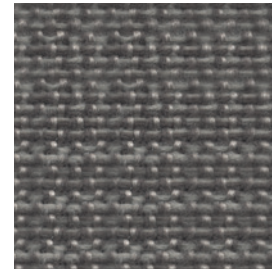
Arancione **4EC**



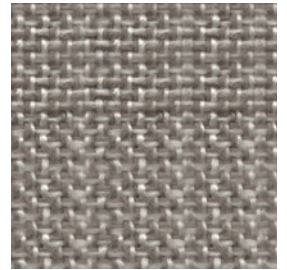
Giallo **4ED**



Marrone **4EE**



Beige **4EF**



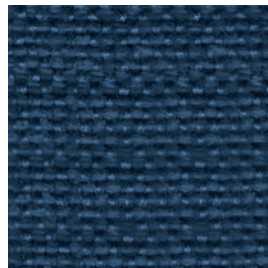
Beige chiaro **4EG**



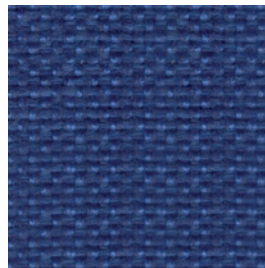
Antracite **4EH**



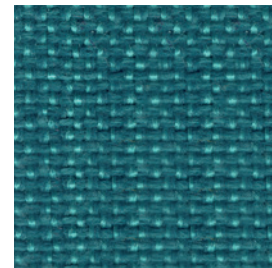
Grigio scuro **4EI**



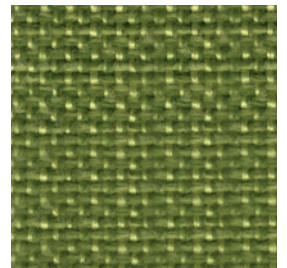
Blu scuro **4EL**



Blu elettrico **4EM**



Smeraldo **4EN**



Verde **4EO**





Ragusa

Descrizione - Description

Tessuto melange e colori uniti / Melange and solid colors

Composizione - Composition

100% Poliestere FR TREVIRA cs

Peso - Weight

En 12127 - 735 g/ml 525 g/m²

Resistenza all'abrasione - Resistance to abrasion

ISO 12947/2 - 150.000 Cicli

Reazione al fuoco - Flammability

UNI 9175 Classe 11M | UNI 9174 - UNI 8456 C1 | DIN 4102 B1

NF 92501-7 M1 | NF D 60013 AM18 | BS 5852 part II CRIB 5

EN 1021-1&2 | BS 7176 Medium hazard | EN 13773 class 1

ONORM B 3825-Onorm A 3800-1 Class B1-Q1-TR1

California TB 117 | USA NFPA 701 - 260 | IMO A 652 Part 8 Upholstery

Cat. 4



Rosso melange **4FG**



Rosso scuro **4FH**



Rosso **4LH**



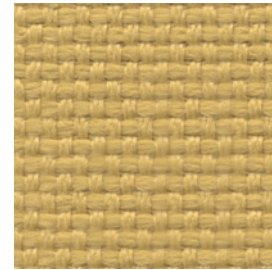
Marrone **4LT**



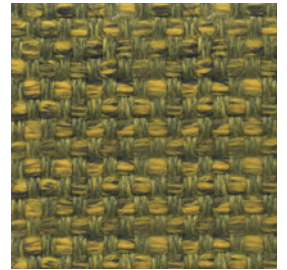
Sacco **4LU**



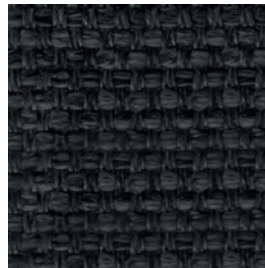
Beige **4LW**



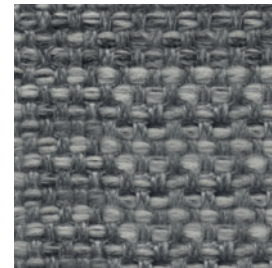
Giallo **4LX**



Giallo verde **4LY**



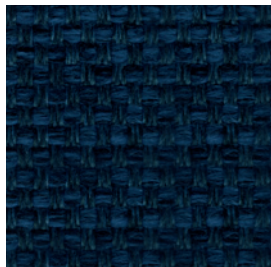
Antracite **4LZ**



Grigio melange **4FA**



Grigio scuro **4LS**



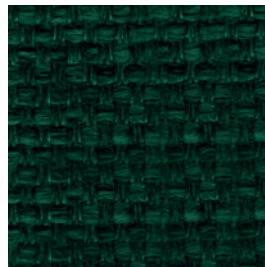
Blu scuro **4FB**



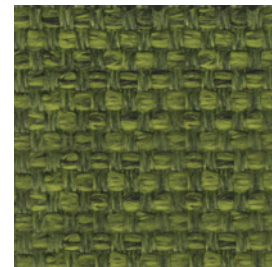
Blu **4FC**



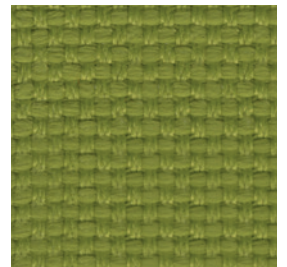
Azzurro **4FD**



Verde scuro **4FE**



Verde chiaro **4FF**



Verde prato **4LB**



Leggere differenze di colore fra un lotto e l'altro sono da considerarsi normali
Slight colour differences between one lot and another have to be considered within commercial tolerance



Superb

Descrizione - Description

Velluto Demitec ignifugo / Fire retardant Velvet

Composizione - Composition

100% PES FR

Peso - Weight

En 12127 - 400 g/m²

Resistenza all'abrasione - Resistance to abrasion

ISO 12947/2 - 60.000 Cicli

Reazione al fuoco - Flammability

UNI 9177-CLASSE 1 | UNI 9175 Classe 1IM | DIN 4102 B1

NF 92501-7 M1 | BS 5852 part II CRIB 5 | EN 1021-1&2

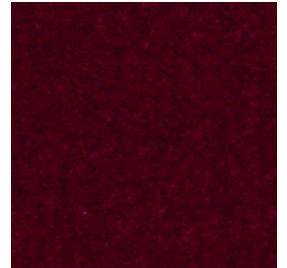
Cat. **5**



Rosso **5AA**



Rosso scuro **5AB**



Viola **5AC**



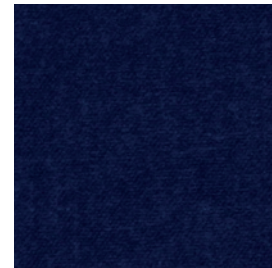
Grigio chiaro **5AD**



Grigio scuro **5AE**



Testa di moro **5AF**



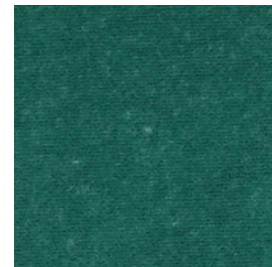
Blu **5AG**



Blu notte **5AH**



Salvia **5AI**



Smeraldo **5AL**



Verde **5AM**



Leggere differenze di colore fra un lotto e l'altro sono da considerarsi normali
Slight colour differences between one lot and another have to be considered within commercial tolerance



Piquant

Descrizione - Description

Tessuto Demitec ignifugo / Fire reetardant fabric

Composizione - Composition

100% PES FR

Peso - Weight

En 12127 - 450 g/m²

Resistenza all'abrasione - Resistance to abrasion

ISO 12947/2 - 45.000 Cicli

Reazione al fuoco - Flammability

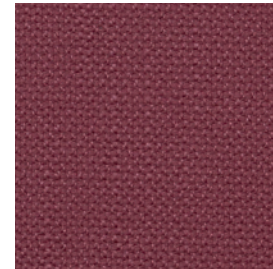
UNI 9177-CLASSE 1 | UNI 9175 Classe 1IM

DIN 4102 B1 | NF 92501-7 M1

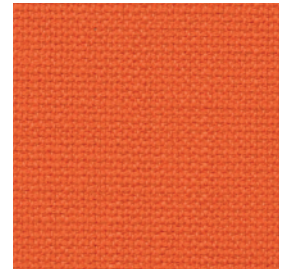
BS 5852 part II CRIB 5 | EN 1021-1&2

California TB 117

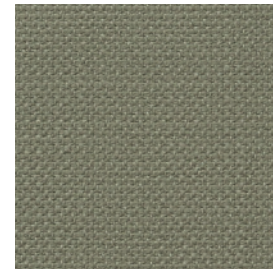
Cat. **5**



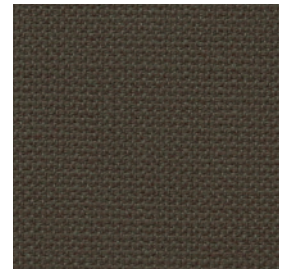
Vinaccia **5BA**



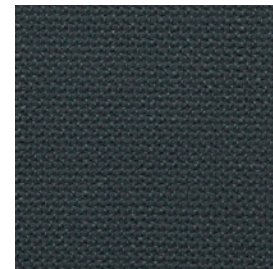
Arancione **5BB**



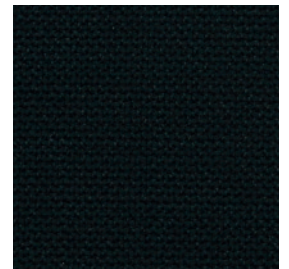
Tortora **5BC**



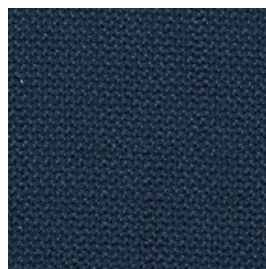
Nocciola **5BD**



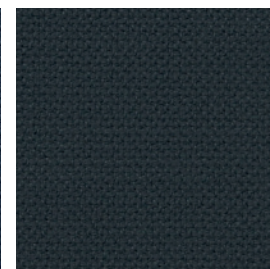
Antracite **5BE**



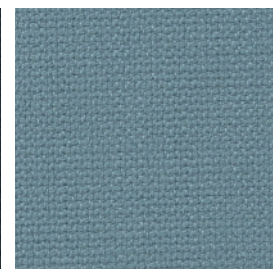
Nero **5BF**



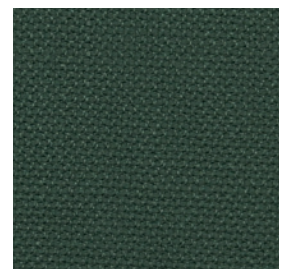
Blu **5BG**



Titanio **5BH**



Celeste **5BI**



Verde **5BL**



Leggere differenze di colore fra un lotto e l'altro sono da considerarsi normali
Slight colour differences between one lot and another have to be considered within commercial tolerance



Hot

Descrizione - Description

Tessuto Demitec ignifugo / Fire retardant fabric

Composizione - Composition

100% PES FR

Peso - Weight

En 12127 - 450 g/m²

Resistenza all'abrasione - Resistance to abrasion

ISO 12947/2 - 45.000 Cicli

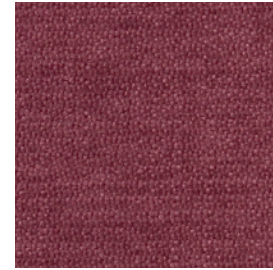
Reazione al fuoco - Flammability

UNI 9175 Classe 1IM

BS 5852 part II CRIB 5

EN 1021-1&2

Cat. **5**



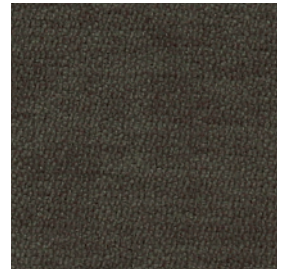
Vinaccia **5CA**



Arancione **5CB**



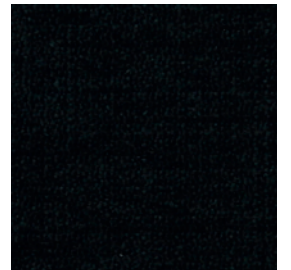
Tortora **5CC**



Nocciola **5CD**



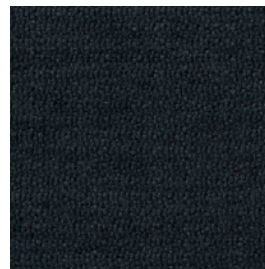
Antracite **5CE**



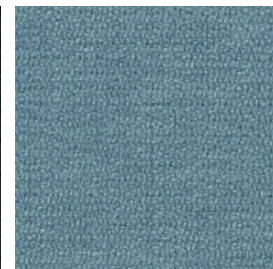
Nero **5CF**



Blu **5CG**



Titanio **5CH**



Celeste **5CI**



Verde **5CL**



Leggere differenze di colore fra un lotto e l'altro sono da considerarsi normali
Slight colour differences between one lot and another have to be considered within commercial tolerance



Bubble

Descrizione - Description

Tessuto Demitec ignifugo / Fire retardant fabric

Composizione - Composition

100% PES FR

Peso - Weight

En 12127 - 420 g/m²

Resistenza all'abrasione - Resistance to abrasion

ISO 12947/2 - 35.000 Cicli

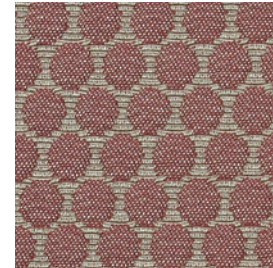
Reazione al fuoco - Flammability

UNI 9175 Classe 1IM I

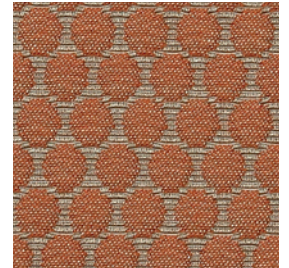
BS 5852 part II CRIB 5

EN 1021-1&2

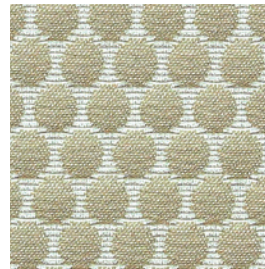
Cat. 5



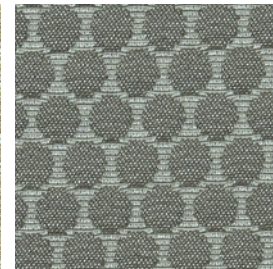
Vinaccia **5DA**



Arancione **5DB**



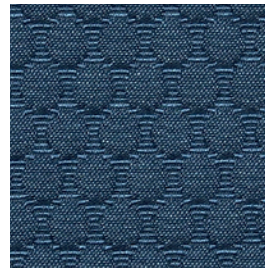
Beige **5DC**



Grigio **5DD**



Antracite **5DE**



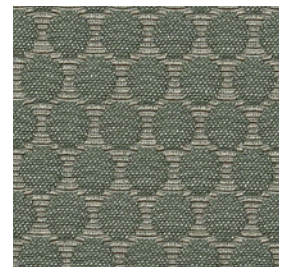
Blu **5DF**



Titanio **5DG**



Celeste **5DH**



Verde **5DI**



Leggere differenze di colore fra un lotto e l'altro sono da considerarsi normali
Slight colour differences between one lot and another have to be considered within commercial tolerance



Pop

Descrizione - Description

Tessuto Demitec ignifugo / Fire retardant fabric

Composizione - Composition

100% PES FR

Peso - Weight

En 12127 - 420 g/m²

Resistenza all'abrasione - Resistance to abrasion

ISO 12947/2 - 35.000 Cicli

Reazione al fuoco - Flammability

UNI 9175 Classe 11M

BS 5852 part II CRIB 5

EN 1021-1&2

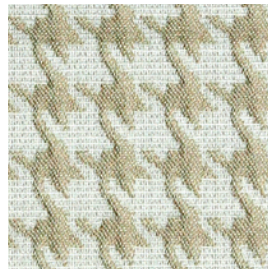
Cat. **5**



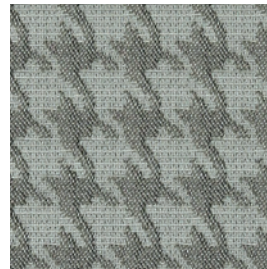
Vinaccia **5EA**



Arancione **5EB**



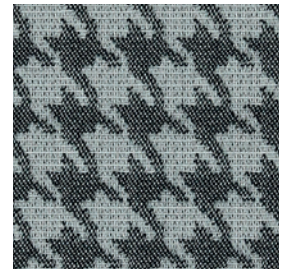
Beige **5EC**



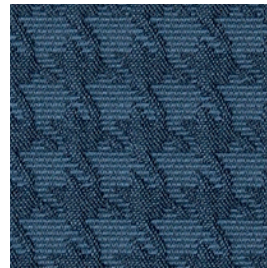
Grigio **5ED**



Antracite **5EE**



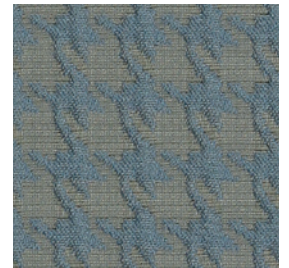
Nero **5EF**



Blu **5EG**



Titanio **5EH**



Celeste **5EI**



Verde **5EL**



Leggere differenze di colore fra un lotto e l'altro sono da considerarsi normali
Slight colour differences between one lot and another have to be considered within commercial tolerance



Pelle Smart

Descrizione - Description

Pelle Fiore corretto smerigliato / Grain Leather corrected

Composizione - Composition

Fiore corretto 100% pelli bovine Africa del Sud / Australia

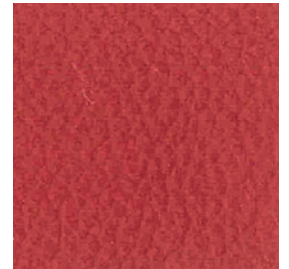
Reazione al fuoco - Flammability

EN 1021-1&2

Cat. **6**



Rossetto **6PO**



Rosso **6PM**



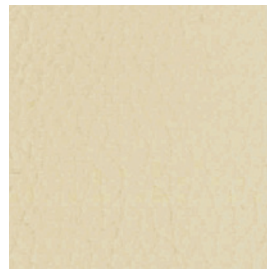
Marrone **6PL**



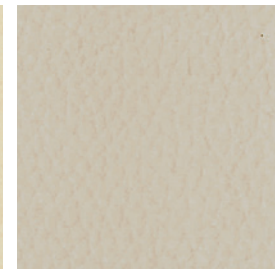
Ginger **6PP**



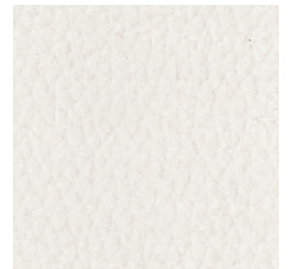
Mostarda **6PH**



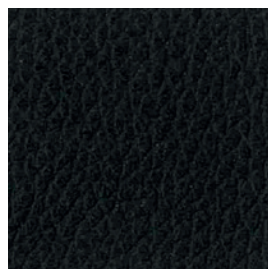
Ghiaccio **6PO**



Milk **6PE**



Polar **6PA**



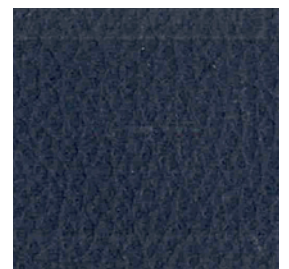
Nero **6PD**



Fango **6PC**



Silver **6PQ**



Bluette **6PR**



Pelle Class

Descrizione - Description

Pelle Fiore smerigliato Madras / Fiore Leather corrected - Madras

Composizione - Composition

100% pelli bovine certificate Europee UE

Cat. 7



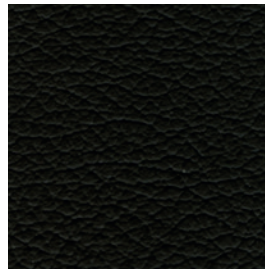
Granato **7PZ**



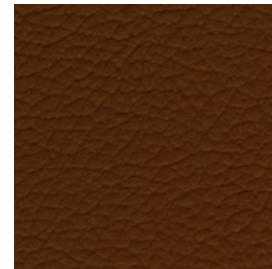
Rosso **7PI**



Girasole **7PP**



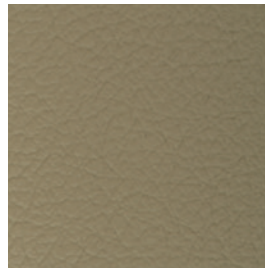
Testa di moro **7PC**



Tabacco **7PB**



Cappuccino **7PA**



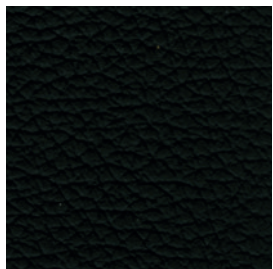
Sabbia **7PQ**



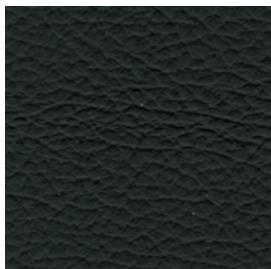
Beige **7PR**



Bianco **7PD**



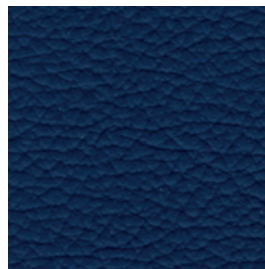
Nero **7PO**



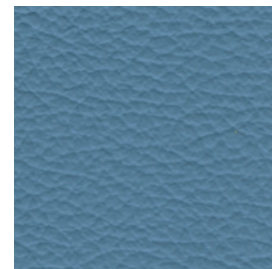
Antracite **7PM**



Creta **7PS**



Genziana **7PT**



Cielo **7PU**



Ruta **7PV**



Leggere differenze di colore fra un lotto e l'altro sono da considerarsi normali
Slight colour differences between one lot and another have to be considered within commercial tolerance



Fiore

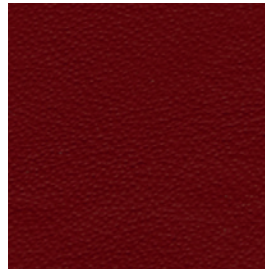
Descrizione - Description

Pelle Fiore / Soft Leather

Composizione - Composition

100% pelli bovine certificate Europee UE

Cat. **8**



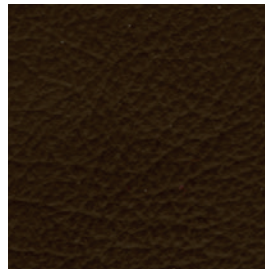
Granato **PF1**



Rosso **PF2**



Testa di moro **PF3**



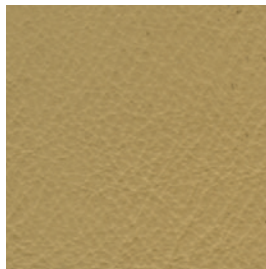
Marrone **PF4**



Tabacco **PF5**



Nocciola **PF6**



Beige **PF7**



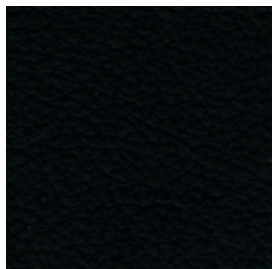
Polvere **PF8**



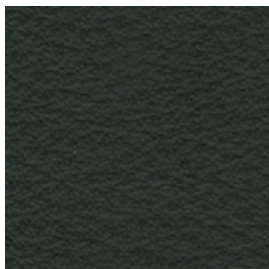
Crema **PF9**



Bianco **PF10**



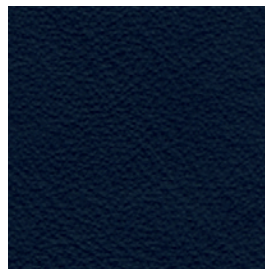
Nero **PF11**



Antracite **PF12**



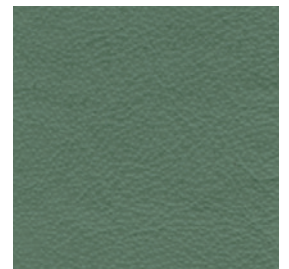
Grigio **PF13**



Blu **PF14**



Petrolio **PF15**



Verde **PF16**



Leggere differenze di colore fra un lotto e l'altro sono da considerarsi normali
Slight colour differences between one lot and another have to be considered within commercial tolerance



Rete

Descrizione - Description

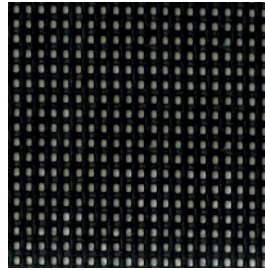
Rete / Mesh

Composizione - Composition

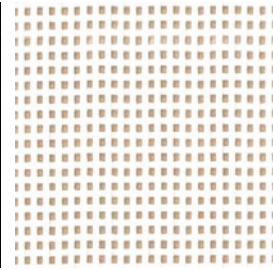
70% Pvc 30% Poliestere

Peso - Weight

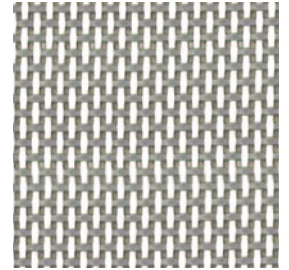
En 12127 - 565 g/m²



Nero **R2F**



Bianco **R2C**



Grigio melange **R2G**